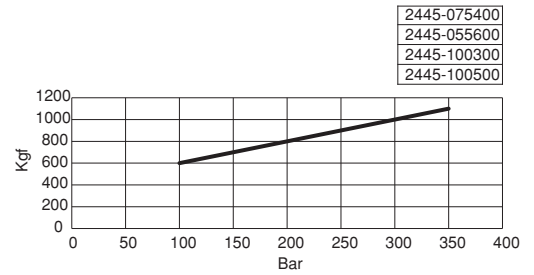
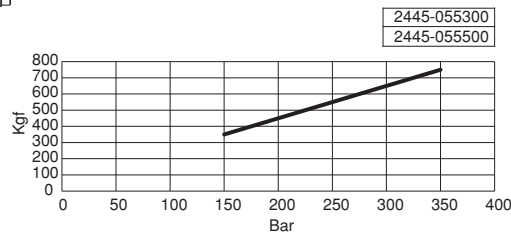
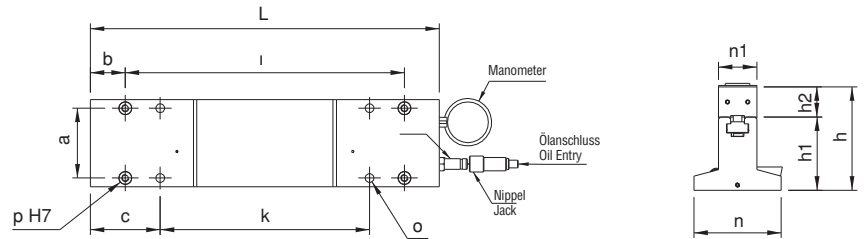
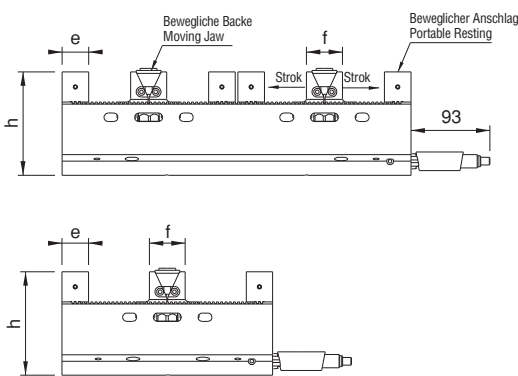


Referenz-Nr. Order No.	L	n	n1	h	h1	h2	o	e	f	a	b	c	k	i	p H7	Spannmenge Coupling Piece	Stroke	Spannkraft Clamping Force Kgf
2445-055300	300	125	55	148	105	43	12.5	38	51.5	100	50	100	100	200	18	2	8x2	750
2445-055500	500	125	55	148	105	43	12.5	38	51.5	100	100	150	200	400	18	4	8x2	750
2445-075400	400	175	75	158	115	43	12.5	48	51.5	150	50	100	200	300	18	2	8x2	1100
2445-075600	600	175	75	158	115	43	12.5	48	51.5	150	100	150	300	500	18	4	8x2	1100
2445-100400	400	175	100	158	115	43	12.5	48	51.5	150	50	100	200	300	18	2	8x2	1100
2445-100600	600	175	100	158	115	43	12.5	48	51.5	150	100	150	300	500	18	4	8x2	1100

2445
• Backen müssen separat bestellt werden.

2445
• You need to purchase jaws separate.



Referenz-Nr. Order No.	Spannmengen Numbers of Double Opening Jaw with Workpiece Couplings	
	2 Werkstück 2 Workpiece	4 Werkstück 4 Workpiece
2445-055300	87 mm	-
2445-055500	-	60 mm
2445-075400	125 mm	-
2445-075600	-	75 mm
2445-100400	125 mm	-
2445-100600	-	75 mm

Hinweis: Bei den Werkstückmaßen sind die weichen Backen nicht inkludiert.

Note: It does not include binding units of measure soft feet in business.

